

## Spring Butterflies on the Island of Skyros, Greece

By JOHN G. COUTSIS, M.Arch.\*

The island of Skyros is situated in the Aegean sea at approximately 39 degrees of latitude north and 25 degrees of longitude east and has an area of about 200 square kilometres. It is separated from the Greek mainland by a distance of about 40 kilometres, a condition which ensures the geographic isolation of non-migratory species and the creation of endemic populations.

The records that follow were made between 30th April and 6th May, 1975 and were realised in the northern half of the island, which happens to be relatively well watered and quite lush by local standards.



Map of Greece

### PIERIDAE

1. *Pieris brassicae* Linnaeus. A few males in the plains and near the coast.
2. *Artogeia rapae* Linnaeus. A small number of individuals of both sexes in the plains and near the coast.

\* 4, Glykonos Street, Athens 139, Greece.

3. *Euchloe crameri* Butler. A few females of the first brood in open places both in the plains and on hillsides; worn and going over.
4. *Leptidea sinapis* Linnaeus. All recorded specimens of the first brood. Male forewing 17-19.5 mm., female forewing 16-19 mm.; small, but otherwise indistinguishable from nominate form. Abundant in watered or moist gulleys; some in light woodland.
5. *Gonepteryx cleopatra* Linnaeus. A few in tatters, undoubtedly representing hibernated specimens. Recorded over hilly country.
6. *Colias crocea* Geoffroy. A small number of males observed by the sea shore.

#### NYMPHALIDAE

7. *Vanessa atalanta* Linnaeus. Recorded singly at various localities.
8. *Vanessa cardui* Linnaeus. Recorded singly at various localities.
9. *Polygonia egea* Cramer. Two males recorded over hilly country.

#### SATYRIDAE

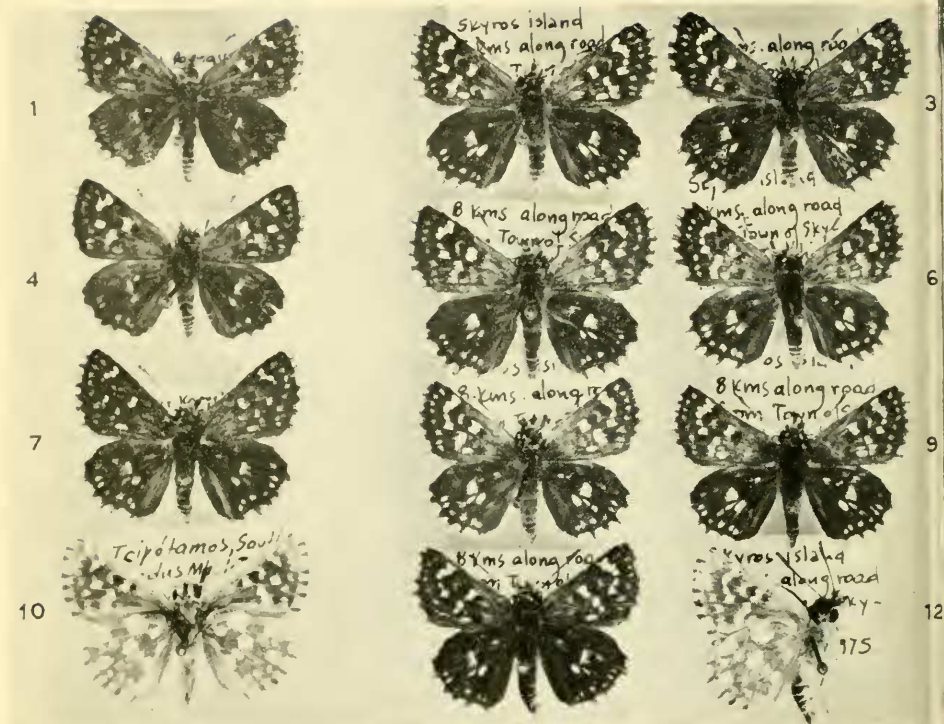
10. *Maniola jurtina* Linnaeus. Two fresh males recorded on hillsides. The species just coming out.
11. *Lasiommata megera* Linnaeus. Quite abundant on hillsides and gulleys.

#### LYCAENIDAE

12. *Callophrys rubi* Linnaeus. Both sexes with forewing 11.5-13 mm.; small, but otherwise indistinguishable from nominate form. Quite abundant on hillsides and in gulleys.
13. *Lycaena phlaeas* Linnaeus. A few recorded at various places.
14. *Celastrina argiolus* Linnaeus. One male of the first brood recorded on a hillside.
15. *Glaucopsyche alexis* Poda **mironi** ssp. nov. Male forewing 11-14 mm., smaller than either nominate form, or Greek mainland forms; upperside ground colour blue as in Greek mainland forms; black marginal borders 1 mm. wide at their widest point. Underside ground colour pale grey, as in Greek mainland forms; forewing black post-discal spots as a rule in an incomplete series, usually faint and often obsolete; hindwing black post-discal spots as a rule absent, occasionally present singly as mere traces; reduction of black spots greater than in any other known European form; base of hindwing underside with metallic blue-green powdering entering and often extending over discal area, as in Greek mainland forms. Female forewing 12-13 mm. Upperside ground colour dark brown, as in Greek mainland forms and without basal blue flush, often present in nominate form. Underside as in male, but ground colour grey-brown. Male genitalia as in Greek mainland forms. Male holotype, female allotype, 20 male and 3 female para-



PLATE II



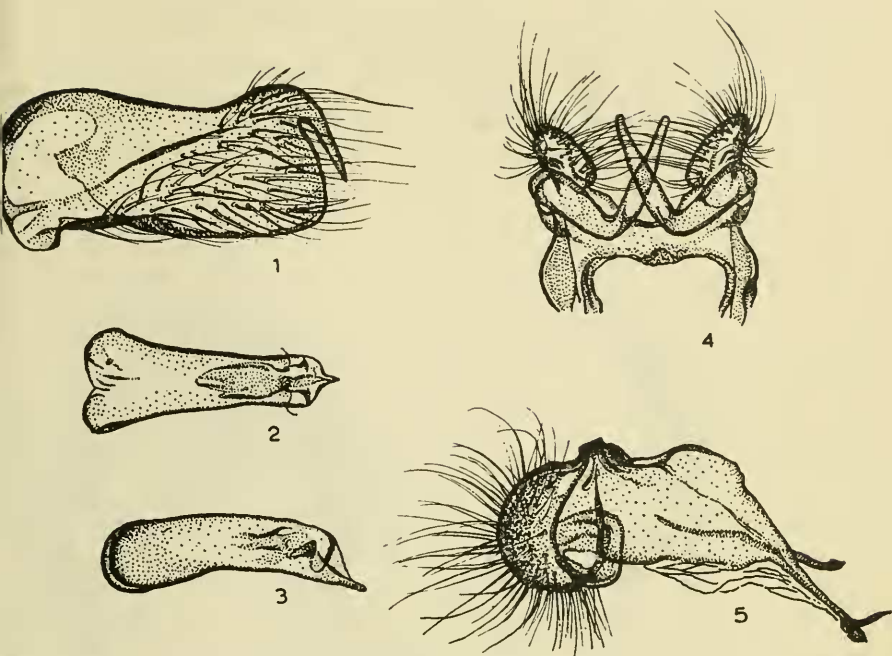
Figs. 1, 4, 7. *Spialia orbifer orbifer* Huebner. ♂ upperside; first brood. Mainland Greece.

Fig. 10. *Spialia orbifer orbifer* Huebner. ♂ underside; first brood. Mainland Greece.

Fig. 2. *Spialia orbifer anavalsae* ssp. nov. ♂ holotype, upperside. Skyros island, 3.v.75.

Figs. 3, 5, 6, 8, 9, 11. *Spialia orbifer anavalsae* ssp. nov. ♂ paratypes, upperside. Skyros island. 30.iv.75 to 6.v.75.

Fig. 12. *Spialia orbifer anavalsae* ssp. nov. ♂ paratype, underside. Skyros island, 4.v.75.



Male genitalia of *Glaucopsyche alexis mironi* ssp. nov.

- Fig. 1. Right valve; side view, innerside.  
 Fig. 2. Aedoeagus; top view.  
 Fig. 3. Aedoeagus; side view.  
 Fig. 4. Labides and falces; bottom view.  
 Fig. 5. Genitalic apparatus with valvae and aedoeagus removed; side view.

types in author's collection. The species was found to be quite abundant in gulleys and the surrounding hills. Male genitalia as in Greek mainland forms.

16. *Philotes vicrama* Moore. A fair number recorded on hill-sides.

#### HESPERIIDAE

17. *Spialia orbifer* Huebner *anavalsae* ssp. nov. All recorded specimens first brood males. Forewing 11-13 mm.; upper-side ground colour dark brown, as in first brood of nominate form; white spots larger and more intense than in nominate form; post-discal white spots of forewing as a rule in a complete series, instead of being interrupted as is the case with first brood of nominate form. Underside as in first brood of nominate form, but forewing white post-discal spots forming a complete series and ground colour of hindwings often very dark olive-grey, darker than any examples of first brood of nominate form. Male genitalia as in nominate form. Male holotype and 8 male paratypes